

Charlotte Console Table

MY HABITAT

## Charlotte Console Table

The Charlotte Console Table is crafted from solid stone, featuring a 3 cm thick top balanced on two sculptural, bullet-shaped legs. The legs can be positioned freely, allowing for a customisable arrangement that suits your space.

Pictured in honed travertine, a natural stone with warm tones and organic textural variations. The last image shows our white marble — see our Stone Overview page for more information.

Dimensions can be adjusted at no extra cost—width/length  $\approx$ 10 cm, height  $\approx$ 5 cm. Add your preferred measurements (cm or inches) in the checkout notes.

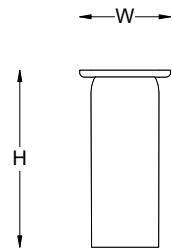
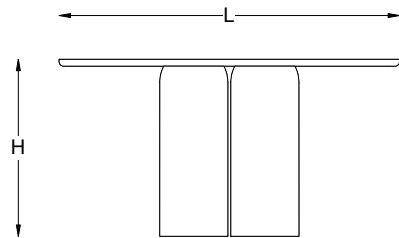
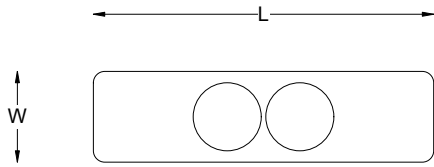
Each piece is made to order and can be customised in size, material, or detail. If you don't see what you need, use the Custom Inquiry Form below for a tailored quote.

STONE CATALOGUE



# Technical Specifications

## Dimensions



Small

L 120 cm × W 40 cm × H 78 cm  
L 47.2 in × W 15.7 in × H 30.7 in



Medium

L 150 cm × W 40 cm × H 78 cm  
L 59.1 in × W 15.7 in × H 30.7 in



Large

L 200 cm × W 50 cm × H 78 cm  
L 78.7 in × W 19.7 in × H 30.7 in

Copyright © 2024 My Habitat Design  
Private and Confidential. No designs, concepts or ideas in this document  
may be used without prior written agreement of MHD.

