

Ettore Desk / Console

A large, rustic wooden desk with a thick top and thick, irregularly shaped legs, set in a workshop. The desk is made of light-colored wood with a natural, wavy edge on the legs. It is positioned in the foreground, with several other wooden workbenches and tools visible in the background. The floor is concrete, and the walls are made of wood and metal.

MY HABITAT

Ettore Desk / Console

The Ettore Sculptural Desk features two wave-shaped sculptural legs and can be used as either a desk or a console, depending on your chosen height.

Pictured in our Lioz Portuguese limestone — see our Stone Overview page for more information.

Dimensions can be adjusted at no extra cost—width/length \approx 10 cm, height \approx 5 cm. Add your preferred measurements (cm or inches) in the checkout notes.

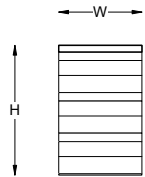
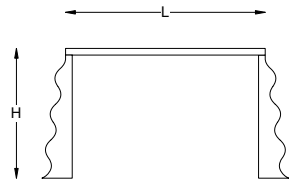
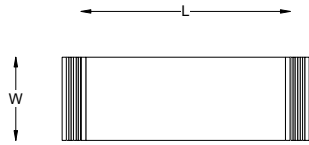
Each piece is made to order and can be customised in size, material, or detail. If you don't see what you need, use the Custom Inquiry Form below for a tailored quote.

STONE CATALOGUE



Technical Specifications

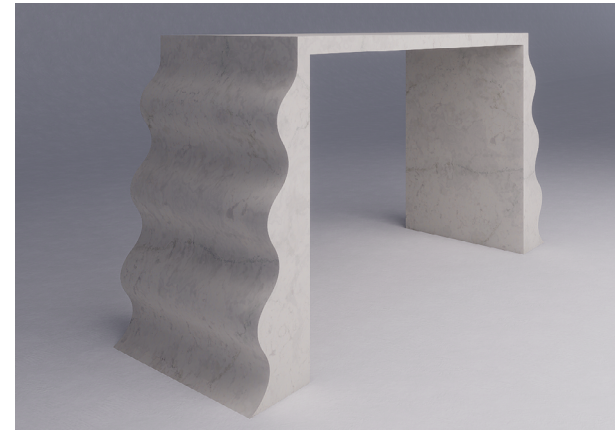
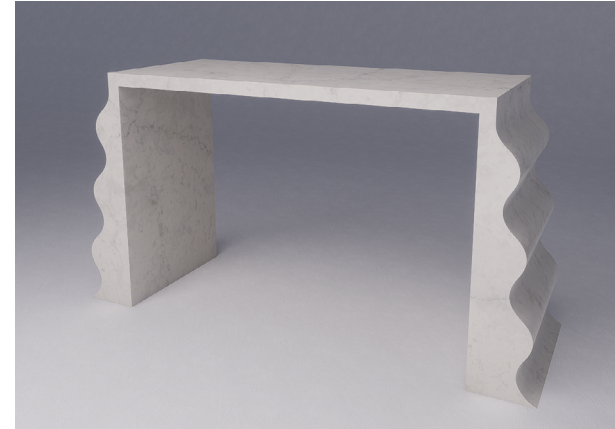
Dimensions



Ettoe Desk / Console

L 120 x W 50 x H 78 cm

L 42.7" x W 19.7" x H 30.7"



Copyright © 2024 My Habitat Design

Private and Confidential. No designs, concepts or ideas in this document may be used without prior written agreement of MHD.

